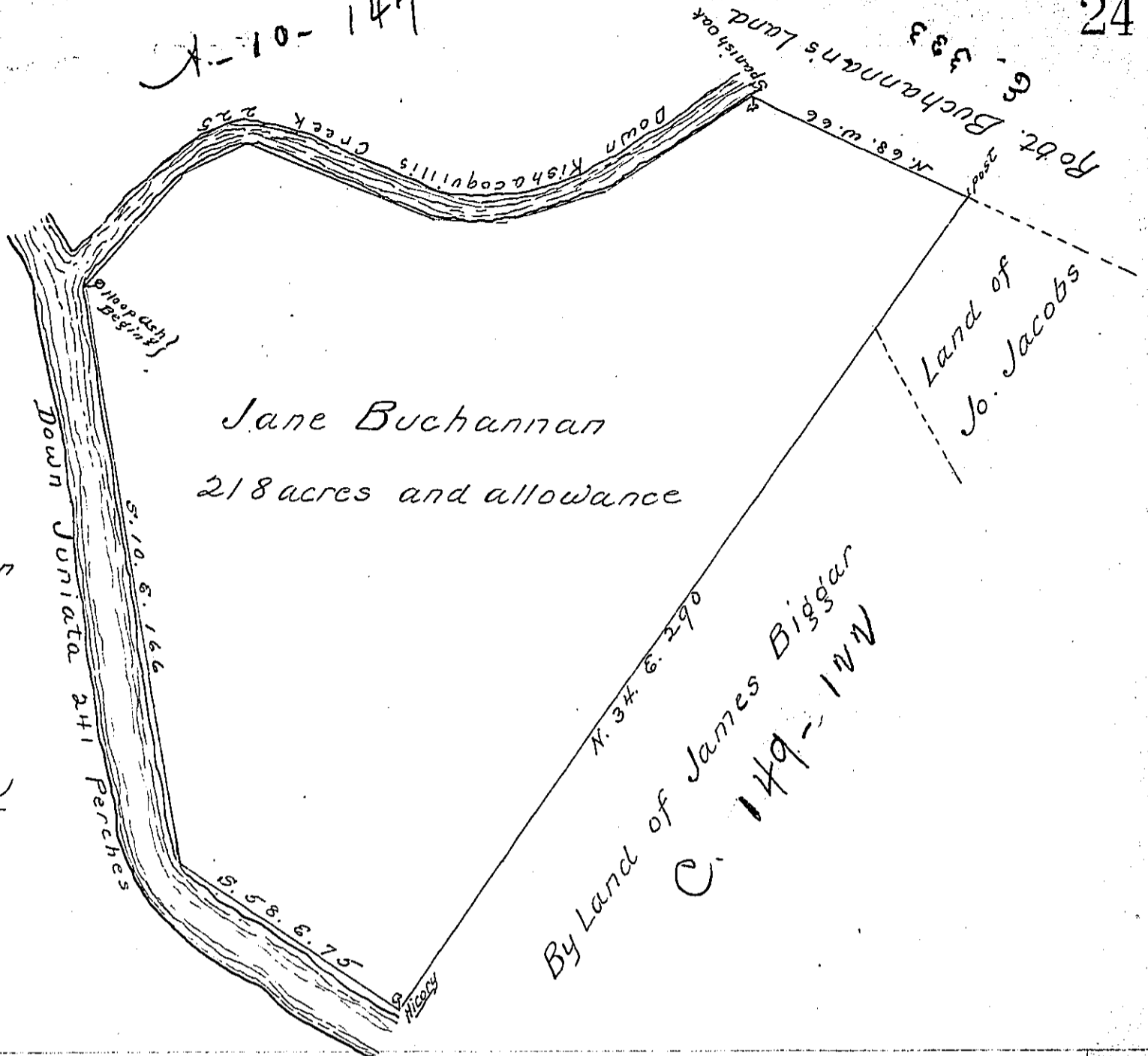


X-10-147



Jane Buchanan
218 acres and allowance

Courses and Distances down the Creek.

- S. 57 W. 51
- S. 7. W. 30
- West 20
- N. 70. W. 58
- S. 62 W. 22
- S. 40. W. 44
- 225

The Draught of a Tract of Land called _____ situate on the north side of Juniata at the mouth of Kishacoquillis Creek in the County of Cumberland containing Two Hundred and eighteen acres with the usual allowance for Roads, Survey'd the 11th day of April Anno Dom: 1766 In pursuance of a warrant from the Honble the Proprietaries bearing date at Philad^a the 5th day of July Anno Dom: 1762 to Jane Buchanan

p. Wm. MacLay L.S.

To John Lukens Esq. S.G. of Pennsylvania

IN TESTIMONY that the above is a copy of the original remaining on file in the Department of Internal Affairs of Pennsylvania, made conformably to an Act of Assembly approved the 16th day of February, 1833, I have hereunto set my Hand and caused the Seal of said Department to be affixed at Harrisburg, this second day of June 19

Isaac P. Brown
Secretary of Internal Affairs.